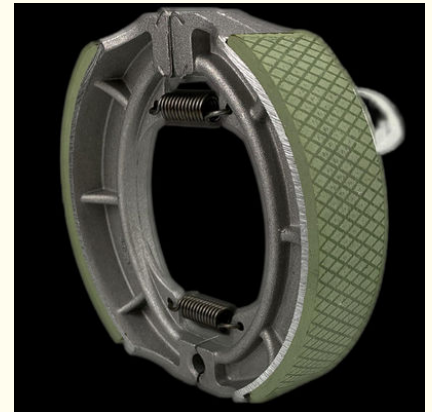




Standard Durability Silver Honda Honda Brake Kit Compatible With Front And Rear Wheels.

Basic Information

- Model Number: CG125



Product Specification

- Position: Front And Rear
- Durability: Long-lasting
- Color: Silver
- Weight: 0.5kg
- Package Contents: 1 Set Of Brake Parts
- Warranty: 1 Year
- Material: Aluminum Alloy
- Size: Standard
- Highlight: **standard honda brake kit,
standard honda big brake kit,
durability honda brake kit**

Our Product Introduction

for more products please visit us on motorbrakeparts.com

Product Description:

Our brake spare parts are made from top-quality materials, ensuring that they are durable, reliable, and long-lasting. They are designed to withstand the wear and tear of regular use, providing consistent and dependable performance every time you hit the brakes.

Our universal brake and clutch parts are compatible with a wide range of Honda motorcycle models, making them a versatile choice for riders of all kinds. Whether you're a seasoned rider or just starting out, our brake spare parts can help you get the most out of your bike's braking system, giving you the confidence and control you need to tackle the toughest terrain.

Each package of our brake and clutch parts includes one full set of parts, giving you everything you need to upgrade your bike's braking system and achieve the performance you desire.

With our 1-year warranty, you can trust that our brake spare parts are backed by our commitment to quality and customer satisfaction. We stand behind our products and are dedicated to providing you with the best possible experience, from purchase to installation and beyond.

Features:

Product Name: Honda motorcycle brake parts

Material: Aluminum Alloy

Type: Disc Brake

Durability: Long-lasting

Performance: High-quality

Package Contents: 1 Set Of Brake Parts

Keywords: Brake And Clutch Parts, Brake And Clutch Parts, Electric Motorcycle Parts

Technical Parameters:

Compatibility:	Universal
Material:	Aluminum Alloy
Type:	Disc Brake
Position:	Front And Rear
Color:	Silver
Package Contents:	1 Set Of Brake Parts
Performance:	High-quality
Weight:	0.5kg
Durability:	Long-lasting
Fitment:	Direct Replacement

This Honda Big Brake Kit includes high-quality brake spare parts made of durable aluminum alloy. The disc brake parts are designed for both front and rear position and come in a silver color. The kit contains 1 set of brake parts that weigh 0.5kg. These hydraulic motor parts are a direct replacement and compatible with universal fitment.

Applications:

Our CG125 brake parts are incredibly easy to install, with standard sizing that makes direct replacement quick and hassle-free. Whether you're a professional mechanic or a DIY enthusiast, our brake pad parts are perfect for anyone looking to replace or upgrade their motorcycle's braking system.

Our brake and clutch parts are suitable for a wide range of applications and occasions, including daily commuting, long-distance touring, and off-road adventures. Whether you're navigating crowded city streets or tackling rough terrain, our brake spare parts will provide reliable and responsive stopping power when you need it most.

With a 1-year warranty included, you can trust our CG125 brake parts to deliver exceptional performance and durability. So why wait? Upgrade your motorcycle's braking system today with our high-quality brake and clutch parts.

Customization:

Looking for a way to customize your Honda motorcycle brake spare parts? Look no further than our product customization services! Our brake spare parts are designed specifically for the Honda CG125 model and are made from high-quality aluminum alloy, ensuring durability and longevity.

Our parts are compatible with a wide range of motorcycles, making them the perfect choice for those looking for a universal fit. Each package contains one set of brake parts, making it easy to install and maintain your Honda big brake kit.

Our fitment services ensure that our parts are a direct replacement for your existing brake parts, making installation quick and hassle-free. Whether you're looking to upgrade your Honda motorcycle or need Kawasaki spare parts, our product customization services have you covered.

Don't settle for subpar brake parts. Choose our Honda motorcycle brake spare parts and experience the difference for yourself.

Support and Services:

Our Honda motorcycle brake parts are designed and manufactured to provide reliable and consistent performance. We offer technical support to help you with any questions or issues you may have with our products. Our team of experts can assist you with installation, maintenance, and troubleshooting. We also provide a range of services, including warranty coverage and repair options. Our goal is to ensure customer satisfaction and safety, so please do not hesitate to reach out to us for any assistance you may need.

Packing and Shipping:

Product Packaging:

The Honda motorcycle brake parts will be securely packaged in a cardboard box.

The box will be labeled with the product name and a description of the contents.

The parts will be wrapped in bubble wrap to ensure they are protected during shipping.

Any necessary installation instructions or manuals will be included in the package.

Shipping:

The Honda motorcycle brake parts will be shipped via a reputable carrier, such as UPS or FedEx.

The shipping cost will be calculated based on the destination and weight of the package.

The estimated delivery date will be provided to the customer at the time of purchase.

The customer will receive a tracking number to monitor the progress of their shipment.

FAQ:

A: The Honda CG125 is compatible with organic brake pads.

Q: Do I need to replace the brake rotors along with the brake pads on my Honda CG125?

A: It is not always necessary to replace the brake rotors when replacing the brake pads. However, it is recommended to inspect the rotors for wear and damage before replacing the pads.

Q: How often should I replace the brake pads on my Honda CG125?

A: The frequency of brake pad replacement depends on your riding habits and conditions. It is recommended to inspect your brake pads every 5,000 miles and replace them if the thickness is less than 3mm.

Q: Can I use aftermarket brake pads on my Honda CG125?

A: Yes, aftermarket brake pads that are compatible with the Honda CG125 can be used.

Q: How do I know if my Honda CG125 brake pads need to be replaced?

A: Signs that your brake pads need to be replaced include squeaking or grinding noises when braking, the brake pedal feeling spongy or soft, or the brake warning light on the dashboard turning on.

 **Tajiang Hardware Die Casting Factory**



huijinliu@163.com



motorbrakeparts.com